

# Technical Data

## Engine

Model ..... DOOSAN DE08TIS  
 Displacement (Total dis. volume) ..... 8,071 cc (2.1 gallon)  
 Rated flywheel horse power  
 DIN 6271, net ..... 147KW (200PS)  
 at 1,900 rpm  
 SAE J1349, net ..... 147KW (197HP)  
 at 1,900 rpm

## Hydraulic system

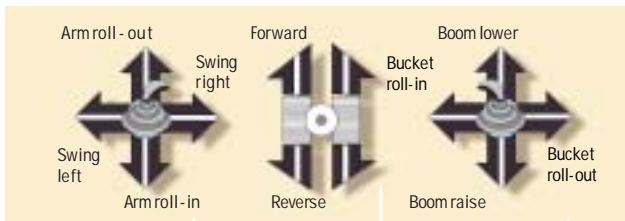
e-EPOS (Electronic Power Optimizing System) allows the operator to maximize work efficiency over a full range of operating conditions and to minimize fuel consumption.

- Hydraulic system assures fully independent and combined operations.
- Automatic 2 speed travel system for high traction force and travel speed.
- Cross-sensing and fuel saving pump system.
- Auto idle system.
- 2-Working / 2-power mode selection system.
- Computer aided engine-pump control.

Pumps type ..... variable displacement axial piston  
 Max. flow rate ..... 2 × 250 ℓ / min (2 × 66 gallon)  
 Main relief set pressure  
 Boom/Arm/ Bucket ..... Normal : 330kgf/cm<sup>2</sup> (4,690 psi)  
 Power Boost : 350kgf/cm<sup>2</sup> (4,970 psi)  
 Travel circuit ..... 330kgf/cm<sup>2</sup> (4,690 psi)

## Controls. 2 implement levers

Lever control type ..... Hydraulic pilot  
 Lever pattern ..... ISO



## Undercarriage

Tractor type undercarriage. Heavy-duty track frame, all welded stress-relieved structure. Top grade materials are used for toughness. Side frames are welded, securely and rigidly, to the track frame. Lifetime-lubricated track rollers, idlers with floating seals and sprockets. Track shoes of induction-hardened rolled alloy with triple grousers. Specially heat-treated connecting pins. Track adjusters with shock-absorbing recoil springs.

Using retract chasis ≥ 50 tons class to achieve high stability and productivity.

Shoe width ..... 600mm (2')  
 Tumbler distance ..... 4,010mm (13'2")

## Weight

Equipped with 10.0m(32'8")boom, 7.0m(23')arm, and 0.64m<sup>3</sup>(0.84yd<sup>3</sup>; PCSA heaped) bucket.

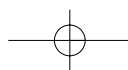
Shoe type	Shoe width	Operating weight	Ground pressure
Triple grouser	600mm (2')	30,700 kg (67,540 lb)	0.59kgf/cm <sup>2</sup> (58kpa, 8.4psi)
	700mm (2'4")	31,300 kg (68,860 lb)	0.52kgf/cm <sup>2</sup> (51kpa, 7.3psi)
	800mm (2'7")	31,700 kg (69,740 lb)	0.46kgf/cm <sup>2</sup> (45kpa, 6.5psi)
	850mm (2'10")	31,900 kg (70,330 lb)	0.43kgf/cm <sup>2</sup> (42kpa, 6.1psi)

## Service refill capacities

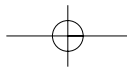
	Liters	US gal	Imp gal
Fuel tank	450	118.9	99.0
Cooling system	37	9.8	8.1
Lubrication		Liters	US gal
Engine oil	24.0	6.3	5.3
Swing drive(each)	6.0	1.6	1.3
Final drive(each)	4.3	1.1	0.9
Hydraulic system	290	76.6	63.8
Hydraulic tank	160	42.3	35.2

## Buckets

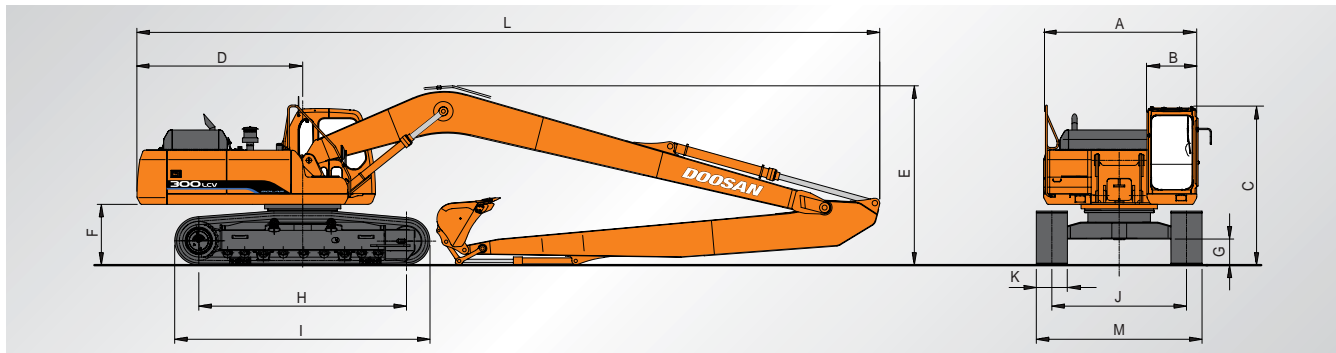
Capacity		Width		Weight	Recommendation
PCSA, heaped	CECE, heaped	Without side cutters	With side cutters		10.0m (32'8") Boom
					7.0m (23') Arm
0.64m <sup>3</sup> (0.84cu.yd)	0.55m <sup>3</sup> (0.72cu.yd)	1,060mm (3'6")	1,145mm (3'9")	478kg (1,054 lb)	-







## Dimensions (10.0m(32'8") Boom, 7.0m(23') Arm, 600mm(2') Shoe)



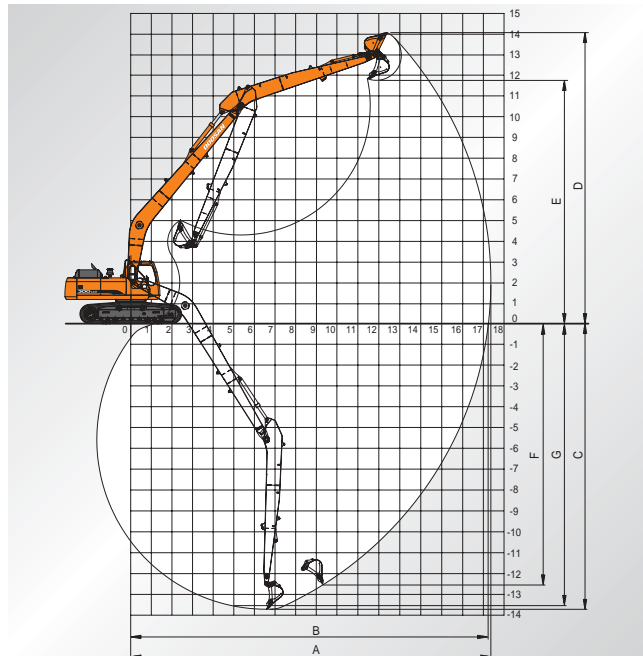
A Overall width of upper structure	2,960mm (9'9")
B Overall width of cab	1,500mm (4'11")
C Overall height of cab	3,065mm (10'1")
D Tail swing radius	3,200mm (10'6")
E Overall height	3,365mm (11'1")
F Clearance under counterweight	1,175mm (3'10")
G Ground clearance	500mm (1'8")
H Tumbler distance	4,010mm (13'2")
I Track length	4,930mm (16'2")
J Track gauge	2,600mm (8'6")
K Track shoe width	600mm (2')
L Overall length	14,345mm (47'1")
M Overall track width with 600mm (2') shoe	3,200mm (10'6")

## Digging forces (Maximum radial tooth forces)

	7.0m (23') Arm
Bucket digging force *	8,300 kgf 81.5 kN 18,300 lbf
Arm digging force *	7,300 kgf 71.7 kN 16,100 lbf

\*At power boost

## Working ranges



	10.0m (32'8")
Boom length	10.0m (32'8")
Arm length	7.0m (23')
A. Max. digging reach	17,440mm (57'3")
B. Max. digging reach at ground level	17,320mm (56'10")
C. Max. digging depth	13,840mm (45'5")
D. Max. digging height	14,100mm (46'3")
E. Max. dumping height	11,790mm (38'8")
F. Max. vertical wall digging depth	12,590mm (41'4")
G. Max. digging depth (8' level)	13,680mm (44'11")



**Doosan Infracore**  
www.doosaninfracore.com

The illustrations do not necessarily show the product in standard version.

All products and equipments are not available in all markets.

Materials and specifications are subjects to change without prior notice. PBP S300C50S 0703

### Seoul Office

Doosan Tower 27<sup>th</sup> FL. 18-12, Euljiro-6Ga,  
Jung-Gu, Seoul, Korea 100-730  
Tel : +82-2-3398-8114  
Fax : +82-2-3398-8117

### Doosan Infracore Europe S.A.

1A, Rue Achille Degrâce, 7080 Frameries, Belgium  
Tel : +32-65-61-3230 Fax : +32-65-67-7338

### Doosan Infracore U.K., Ltd.

Doosan House, Unit 6, 3 Heol Y Gamlas, Parc  
Nantgarw, Nantgarw, Cardiff. CF15 7QU, U.K.  
Tel : +44-1443-84-2273 Fax : +44-1443-84-1933

### Doosan Infracore Europe S.A. Germany

Heinrich-von-Stephan str. 2 40764 Langenfeld,  
Germany  
Tel : +49-2173-2035-210 Fax : +49-2173-2035-219

### Doosan Infracore France

ZAC de La Clef Saint Pierre - Buroplus 2 1A Avenue Jean  
d'Alembert 78990 Elancourt, France  
Tel : +33-(0)1-30-16-21-41 Fax : +33-(0)1-30-16-21-44

### Doosan Infracore America Corporation

2905 Shawnee Industrial Way, Suwanee, Georgia  
30024, U. S. A  
Tel : +1-770-831-2200 Fax : +1-770-831-0480

### Doosan Infracore China Co., Ltd.

#28, Wuzhishan Road, Eco. & Tech, Development Zone, Yantai, Shandong, China  
Tel : +86-535-638-2000 Fax : +86-535-638-2004

### Doosan Infracore South Africa (PTY) LTD.

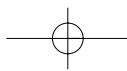
60C Electron Road, Isando 1600, Johannesburg, South Africa  
Tel : 27-11-974-2095 Fax : 27-11-974-2778

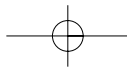
### Doosan Infracore Middle East Center (Dubai)

P.O.Box 183127, Al-Serkal Building, Air Port Road, Dubai, U.A.E  
Tel : +971-4-295-2781~2 Fax : +971-4-295-2783

### Doosan Infracore Latinamerica oficina (Colombia)

Dia gonal 127 A No. 17-14, oficina 302 Bogota, Colombia  
Tel : +571-216-1655 Fax : +571-648-7700





Doosan Infracore  
Construction Equipment

# SOLAR300LCV SLR

Engine Power : DIN 6271,net 147kw(200ps)@1,950 rpm

SAE J1349,net 147kw(197HP)@1,950 rpm

Operational Weight : 30,700kg (67,681 lb)

Bucket capacity(PCSA) : 0.641m<sup>3</sup>(0.84 cu.yd)

